



DGLogik and SkyFoundry Announce Integration of DGLux and SkySpark™ Software Applications

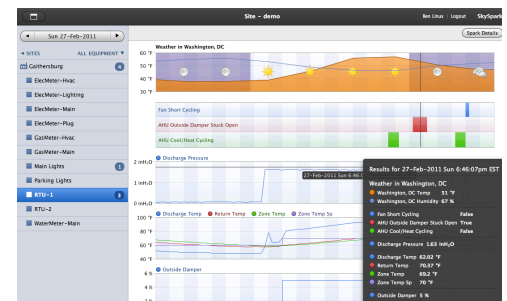
Apr 15 2011. DGLogik and SkyFoundry today announced that integration between DGLux and SkySpark is complete and available to customers. The integration enables the DGLux visualization platform to connect with SkyFoundry's SkySpark analytics platform to provide a seamless view of analytic results along with real time system data from control devices presented in rich graphic displays.

SkySpark excels at identifying issues and patterns in operational data to inform users about inefficiency, energy waste and equipment faults. DGLux provides a sophisticated, fully configurable visualization layer which enables efficient and effective delivery of Key Performance Indicators in a format best suited for the target audience.

The integration enables DGLux and SkySpark users to view actionable information in a visually appealing and easily consumable matter to assist users in maximizing operational efficiency.

About SkyFoundry. SkyFoundry provides software solutions for the “the Internet of things”, helping customers derive value from their investments in smart systems. The company’s SkySpark analytics platform identifies opportunities for operational improvements and cost reduction in control and equipment systems by automatically analyzing data to “find what matters”. Learn more at www.skyfoundry.com.

About DGLogik. DGLogik, Inc. is a company focused on providing customized solutions that address the most significant issues of an enterprise. The technology organization provides sophisticated tools and methodologies to enable service providers and enterprises to gain meaningful insight of critical performance intelligence through visualization on large data sets. Learn more at www.dglogik.com.



###